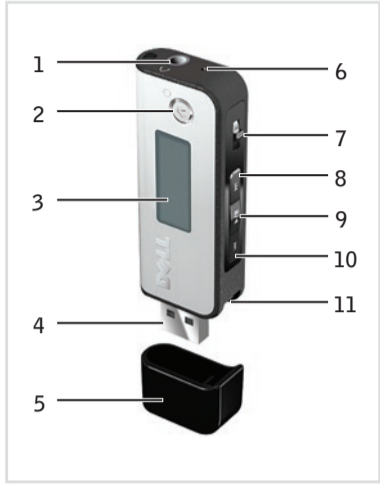




Setting Up Your Dell™ DJ

CAUTION: SAFETY PRECAUTIONS

See *Dell DJ Ditty™ Product Information Guide* for safety and regulatory information.



Features	
1. headphone connector	7. volume/scroll/select dial (see below)
2. home/power button	8. fast forward/skip forward
3. LCD screen	9. play/pause
4. USB connector	10. rewind/skip back
5. USB protective cap	11. lanyard attachment
6. reset button	



The **volume/scroll/select** dial is used to adjust the volume, navigate the menus and select items.



Install Software

NOTE: Ensure that your Dell DJ Ditty is not connected to your computer during the software installation process. Close all other applications before installation.

1. Insert the *Dell DJ Ditty Product Software* CD into your CD drive. If the CD does not run automatically:
 - a. Navigate to the CD drive.
 - b. Double-click **CDINSTALLER.EXE**.
2. At the installation screen, click **Install** and follow the instructions on the screen.

NOTE: If the software finds a different version of Musicmatch® already installed on your system, you will be asked if you want to continue to install Musicmatch. Click **Yes** to use Musicmatch with the DJ Ditty.

3. When prompted to restart your computer, select **Yes** to restart the computer and enable the software.

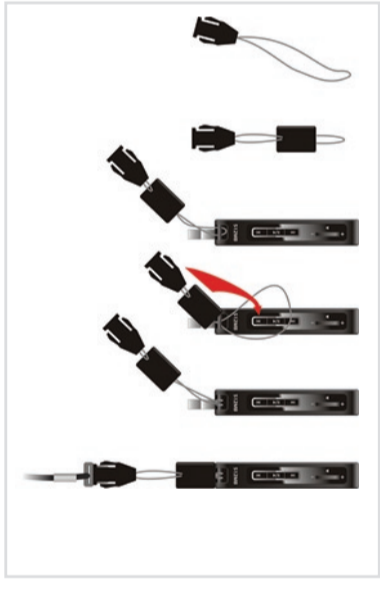


Connect the DJ Ditty and Charge the Battery

1. Ensure that your computer is turned on.
2. Connect the DJ Ditty directly to a USB port on your computer. **NOTE:** Use a USB extension cable (not included) if access is inconvenient.
3. To charge the battery, leave the DJ Ditty plugged into the USB port for 2.5 hours.

NOTE: Always wait until File Transfer is complete before disconnecting the DJ Ditty from the computer.

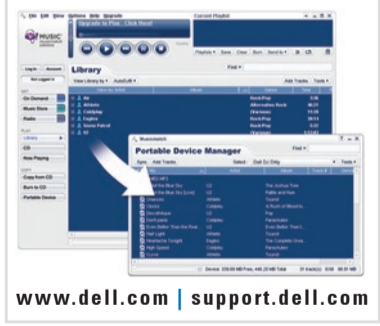
NOTE: Do not use your DJ Ditty for the first time until you have charged the battery for at least 2.5 hours.



Attach the Lanyard

1. Slide the USB protective cap over the small cable.
2. Loop the small cable through the lanyard attachment on the Dell DJ Ditty.
3. Pass the clip and the USB protective cap through the loop.
4. Pull the clip and USB protective cap to secure the small cable.
5. Snap on the large lanyard loop.

See:
 - *Dell DJ Ditty Owner's Manual* for more information on setting up and using the DJ Ditty.
 - support.dell.com for the latest updated information, frequently asked questions, and latest software downloads.



Transfer Files Using Musicmatch

Use Musicmatch to convert or 'rip' music CDs to digital music files.

1. Click **Start > All Programs > Musicmatch Jukebox**.
2. Click **View > Portable Device Manager**.
3. Locate and click the tracks that you want to copy, and drag and drop the files to the DJ Ditty.

NOTE: For more information, see Musicmatch Help (click **Start > All Programs > Musicmatch Jukebox**; click **Help**)

www.dell.com | support.dell.com

Play Digital Music

1. Press the **home/power** button once to access the main menu.
2. Move the **volume/scroll/select** dial to the left or right to highlight **Music Library** and then press in the **volume/scroll/select** dial to select.
3. Highlight **Music** and then press in the **volume/scroll/select** dial to select.
4. Press the **play/pause** button.

NOTE: The DJ Ditty can play tracks in MP3 and WMA formats.

Listen to FM Radio

1. Press the **home/power** button once to access the main menu.
2. Move the **volume/scroll/select** dial to highlight **FM Radio** and then press in to select.
3. Highlight and then select **Yes** to autoscans the 10 strongest radio stations.
4. Use the **fast forward** or **rewind** buttons to change stations.

NOTE: To turn the DJ Ditty on or off, ensure that it is disconnected from your computer, then press and hold the **home/power** button for 2 seconds.

CAUTION: SAFETY PRECAUTIONS

- Do not store in areas below -10°C/14°F or above 45°C/113°F.
- Do not operate in areas below 0°C/32°F or above 40°C/104°F.
- Do not expose to heat or incinerate.
- Keep away from strong magnetic fields.
- Keep away from excessive moisture.
- Do not get your Dell DJ Ditty wet.
- Do not dismantle.

NOTE: Do not subject the DJ Ditty to excessive force or impact, which may damage the unit.

NOTE: Always keep the USB protective cap attached when your Dell DJ Ditty is not connected to a computer.

NOTE: To use the Dell DJ Ditty with your computer, your computer must be running the Microsoft® Windows® XP operating system with Service Pack (SP) 1 or later and Windows Media Player 10 or later.